



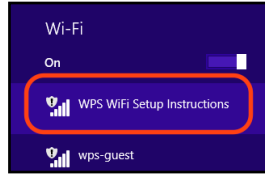
Windows 8 Instructions



Step 1: Click the Network icon in the bottom right



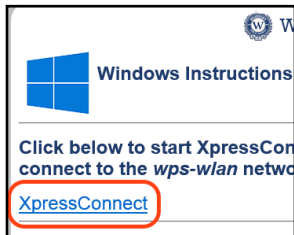
Step 2: Connect your computer to the "WPS WiFi Setup Instructions" network



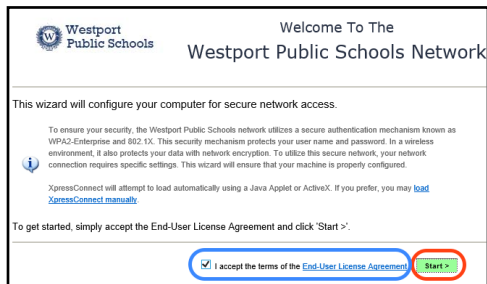
Step 3: Launch the Internet Explorer (IE) web browser, click "Windows"



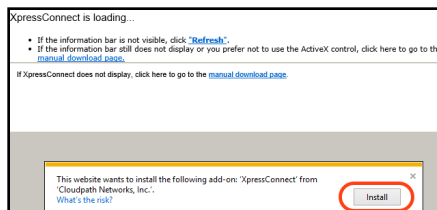
Step 4: Click "XpressConnect"



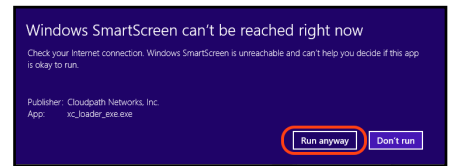
Step 5: Check the box to "accept the End-User License Agreement," which is the same as your Westport Acceptable Use Policy. Once the box is checked, please click "Start"



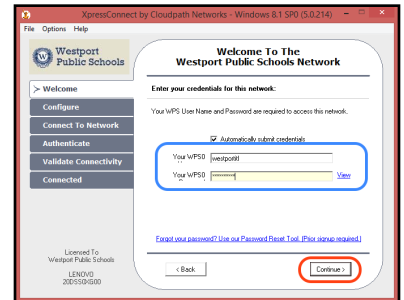
Step 6: Click "Install" to run the XpressConnect add-on. This step normally takes a few seconds. If the information bar is not visible, refresh the webpage (press F5). -- you may need to **Allow** your computer to install the program depending on your computer's settings --



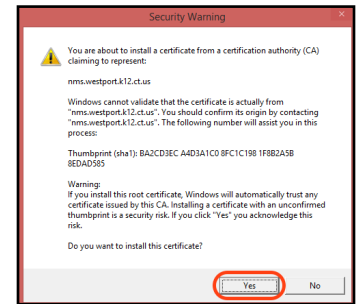
Step 7: Click "Run anyway" to start XpressConnect



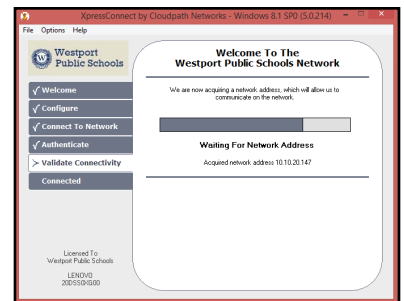
Step 8: Enter your WPS username and password and click "Continue"



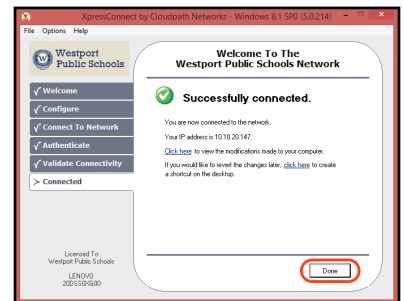
Step 9: You will get a security warning about installing certificates. Click "Yes" to install all required certificates



Step 10: XpressConnect will then verify that you can successfully connect to the network



Step 11: When complete, XpressConnect notifies you that you have successfully connected to the network. Click "Done" to exit



Step 12: If you view your wireless connections in the Networks window, you will see "wps-wlan" listed as "Connected"

